

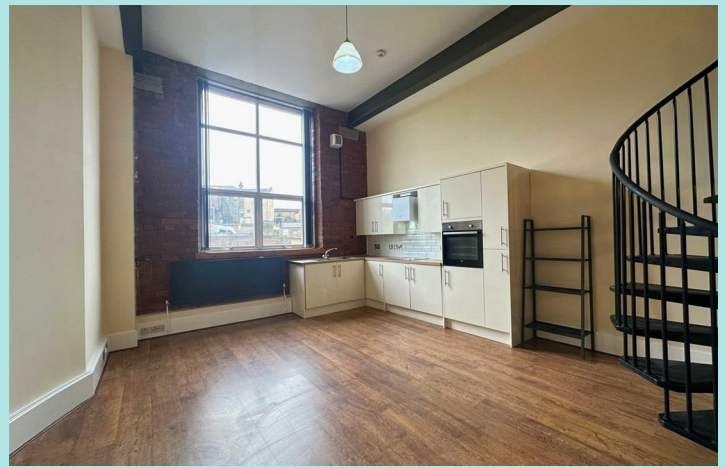


Apartment 26, 1, Sprinkwell Bradford Road

Dewsbury, WF13 2DS

£700 PCM





Summary:

New to the market is this one bedroomed apartment forming part of this modern converted mill development, with some of the old features of the spinning mill still present. The block benefits from lift access, communal gym facilities, one allocated parking space with visitors bays available. Newly refurbished the apartment internally comprises; open plan lounge/kitchen, 3 piece suite bathroom, and open plan bedroom on a mezzanine floor.

Location:

Conveniently located, the development is a stones through away from Dewsbury Railway Station and within walking distance to the town centre with lots of amenities including Lidl located directly across from the block and easy access to the motorway network.

Accommodation:

Internally, the apartment has been fully refurbished throughout to a high standard, coming through the main door the bathroom is to the left with 3 piece suite to include low flush WC, sink basin, and shower cubicle. Continuing through to the open plan living area the brand new kitchen benefits from electric hob, integrated fridge and freezer, mid level open, and washing machine. Accessed via a spiral staircase from the lounge area, the open plan bedroom is on a mezzanine floor with glass panelled balcony benefiting from bedframe, two bedside tables and draws.

Externally, the complex benefits from secure gated access with one allocated parking space on the upper level, the block has use of a life with the tenants having use of the communal gym facilities available to residents only.

Council tax band: A

EPC rating: E

Deposit: £807



ws-residential.co.uk

01484 711200



These particulars, whilst believed to be accurate are set out as a general outline only for guidance and do not constitute any part of an offer or contract. Intending purchasers should not rely on them as statements of representation of fact, but must satisfy themselves by inspection or otherwise as to their accuracy. No person in this firms employment has the authority to make or give any representation or warranty in respect of the property.